



GAT MONTHLY MEMBERSHIP PROGRESS REPORT

Results as of: 6/30/2024

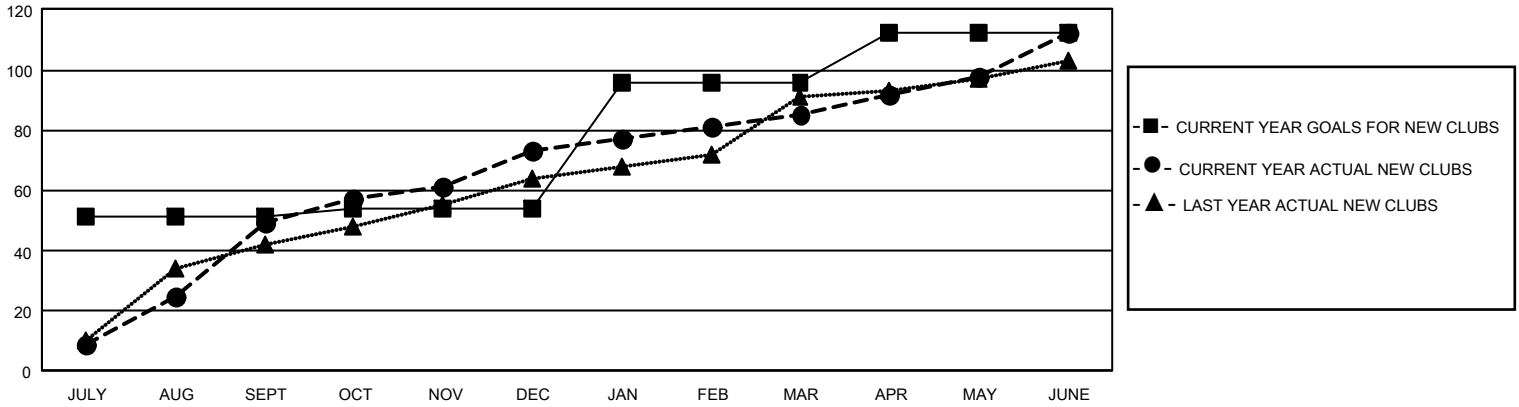
GMT Constitutional Area 6 - I, Group E

REPORT DOES NOT INCLUDE CLUBS IN UNDISTRICTED AREAS.

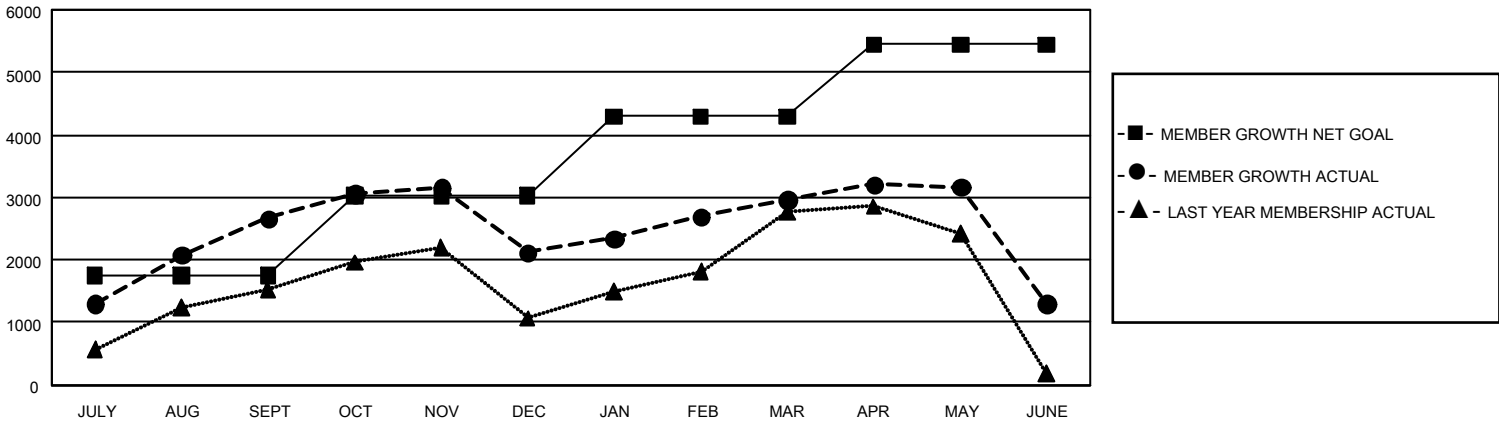
Clubs			
RESULTS FOR 2023-2024			
QUARTER	NEW CLUB GOAL	NEW CLUBS	DROPPED CLUBS
JULY/AUG/SEPT	153	49	15
OCT/NOV/DEC	9	24	45
JAN/FEB/MAR	126	12	11
APR/MAY/JUNE	48	27	10

Members			
RESULTS FOR 2023-2024			
QUARTER	MEMBER GROWTH NET GOAL	MEMBER GROWTH ACTUAL	DROPPED MEMBERS ACTUAL (including transfers)
JULY/AUG/SEPT	1753	4,025	1,185
OCT/NOV/DEC	1270	1,912	2,391
JAN/FEB/MAR	1270	1,524	535
APR/MAY/JUNE	1150	2,246	3,509

GOALS AND ACTUAL NEW CLUBS CUMULATIVE



GOALS AND ACTUAL MEMBERS CUMULATIVE



DROPPED CLUBS: 81	1,122 CLUBS OF 1,567 ADDED 1 OR MORE NEW MEMBERS	GENDER DISTRIBUTION	
		MALE 37,308 (78.74%) FEMALE 10,069 (21.25%) NON BINARY 0 (0.00%) PREFER NOT TO ANSWER 2 (0.00%)	
DROPPED MEMBERS		CLICK HERE FOR CUMULATIVE MEMBERSHIP DATA	TOTAL FAMILY UNIT MEMBERS 14,914
DECEASED 190 CLUB CANCELLED 1,064 OTHER 6,327 TOTAL 7,581			FAMILY MEMBERS PAYING HALF DUES 7,993